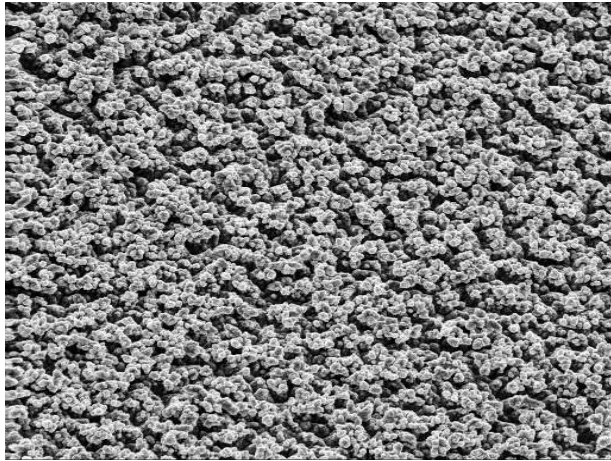
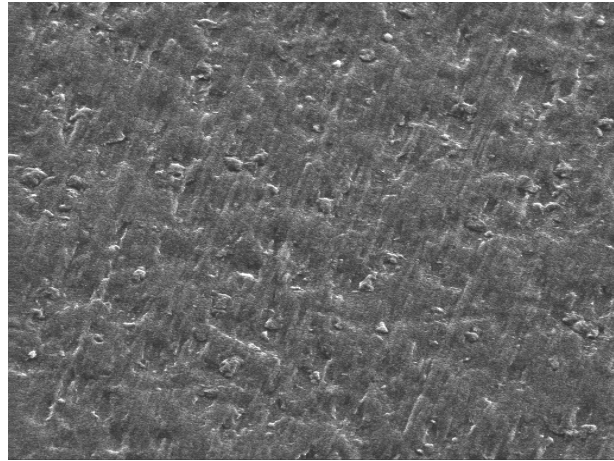


TOB-III

TOBIII is a grade 3 (HTE) copper foil with a TOB treatment designed for multilayer constructions and is fully compatible with all epoxy resin systems.



Treated (Matte) Side TOBIII (1/2 Ounce)



Drum Side TOBIII (1/2 Ounce)

| Nominal Thickness | | microns | 18 | 35 | 70 |
|---|------------|--------------------|-----|------|------|
| | | oz/ft ² | 1/2 | 1 | 2 |
| Tensile | ambient | Kpsi | 60 | 55 | 52.5 |
| | 180° C | Kpsi | 30 | 30 | 30 |
| Elongation | ambient | Kpsi | 8 | 15 | 20 |
| | 180° C | %E | 8 | 8 | 8 |
| Roughness - Ra | Drum side | μinch | 10 | 10 | 10 |
| Roughness - Rz | Matte side | μinch | 200 | 250 | 400 |
| Peel Strength B Condition Epoxy, Tg 170°C | Matte Side | Lbs/in | 7.5 | 10.5 | 15.0 |

Performance Benefits

- Zinc barrier layer promotes long term bond strength and resists pink ring.
- HTE characteristics eliminate inner layer foil cracking.
- Provides consistency in etching and drilling.

*Note: Nominal thickness is determined by area weight. Actual measured thickness may be slightly higher due to matte side topography.

The information contained in this data sheet is not intended to and does not create any warranties, express or implied, including any warranty of merchantability or fitness for a particular purpose. The actual performance of Mitsui materials will vary according to the customer's application.

An ISO 9001 and ISO 14001 Registered Company. Visit our website at www.oakmitsui.com
(6260)